



MY FUTURE. MY WAY.

Glencliff High School

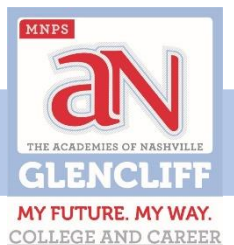
MNPS PAC Meeting
November 16, 2021
6:00 pm

*Glencliff High School will support
challenge and engage every student to
become college and career ready*



Clint Wilson
Executive Principal
Glencliff High School

Glencliff High School



Glencliff High School



GHS, is nestled in the Glencliff Community, of Nashville, TN. We have a very large group of Community, and Business Partners that support our students and their families.
30- Business Partners
30-Community Partners



GHS is the only High School in the State of Tennessee that offers Mariachi as a class and has its own Mariachi Band! Our Mariachi Band is very well known within the Middle Tennessee Community, performing at Plaza Mariachi and the Nashville Symphony Schermerhorn Center annually.



Glencliff High School (GHS) is One of the most diverse high schools in the State of Tennessee! We have students from over 30 different Countries who speak 25 different languages. We acknowledge our Diversity every Spring with an International Day Celebration!

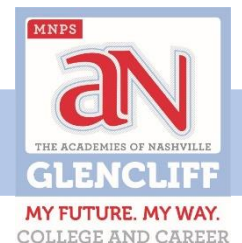


GHS, is the first school in the State of Tennessee to have a Best Buddies Program. This has creates an inclusive environment in which all students are valued and accepted. "Our Greatest Need is to be Needed" is a play showcased annually created by the Best Buddies program to promote inclusivity.



We offer students several Early Post Secondary Opportunities (EPSO), from Advanced Placement, Dual Enrollment, Dual Credit, to Industry Certifications. Glencliff students have the opportunity to leave High School with up to 9 college credit hours and Industry Certifications.

Glencliff High School



Fast Facts about Glencliff

Enrollment: 1,124 student

- FA- 335 AAT- 289
- FABI-251 AHH- 233

Demographics

- Asian- 3.11%
- Black or African American- 16.37 %
- Hispanic/ Latino- 67.70%
- White- 12.81 %

Gender

- Female- 43.33%
- Male- 56.67 %

25 Languages

30 Different Countries

GLENCLIFF FEEDER PATHWAY

Fall-Hamilton ES
Glenview ES K-4
Whitsitt ES



Cameron
College Prep 5-8



Glencliff HS 9-12

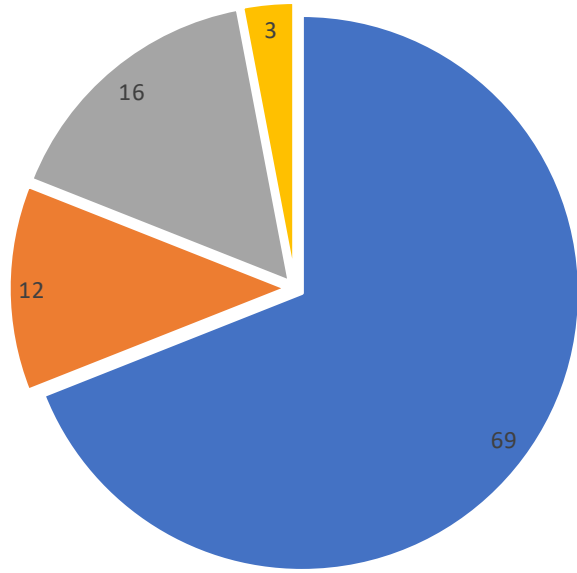
Glencliff ES
Glengarry ES K-4
Paragon Mills ES



Wright MS 5-8

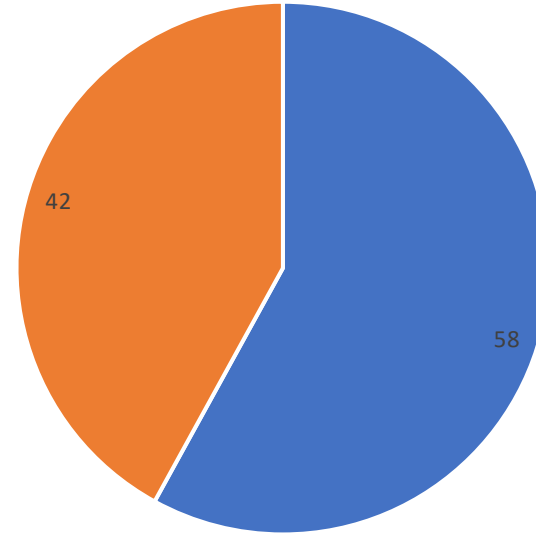
Glencliff High School

Ethnicity



■ Hispanic ■ White ■ Black ■ Asian

EL Status



■ EL ■ Non-EL



Extracurricular Activities & Athletics

EXTRACURRICULAR ACTIVITIES

Anime Club
Ballet Folklorico
Marching Band
Best Buddies
Beta Club
DECA
Escalera
FFA
Gay, Straight Alliance
HOSA
Mariachi
COLT News
Student Government
Association
Teen Parent Support Group
YMCA Latino Achievers
YMCA Black Achievers
Youth in Government/ MUN

ATHLETICS

Baseball
Basketball
Bowling
Boys' Soccer
Cheerleading / Dance
Cross Country
Football
Girls' Soccer
Girls' Softball
Girls' Volleyball
Golf
Wrestling
Tennis
Track and Field



Glencliff High School

The Academies of Glenclyff High School

4 College and Career Academies

- The Freshman Academy
- The Academy of Health and Hospitality
- The Ford Academy of Business and Innovation
- The Academy of Agriculture, Automotive and Technology



The Freshman Academy

The Freshman Academy is the foundation for students at Glencliff High School! It is here where students are acclimated to High School. They learn more about the Pathways and Academies so that they are prepared in the spring to pick their academy.



The Freshman Academy students participate in the following classes or experiential learning:

- Freshman Seminar/ AVID 1
- MNPS Career Fair
- Professionalism Fair
- College Field Trip



The Academy of Health and Hospitality

Our mission is to inspire our students to be exemplary scholars in Health and Hospitality to ensure college and career readiness.

Pathways

Culinary Arts

- Taste of Glencliff: Bringing to life the food of our thirty-seven cultures at Glencliff High School.
- Chili Cook Off, Culinary Competitions: Culinary students take part in local, state and national presentations, competitions and community partnerships.
- Weekly Restaurant Service from the Southern Tea Room, provided by Culinary Art Students.

Dual Credit: Personal Finance
Industry Certifications: Safe Serve

Therapeutic Services

- Blood Assurance Blood Drives: Organizes and coordinates the quarterly blood drives. The student led Blood Drive Committee orchestrates and educates our community on the importance of giving blood.
- HOSA: Health Occupation Students of America is a national student organization that supports students in pursuit of health industry occupations. Offers competitive events on health standards of learning and fosters teamwork.
- AON Health Scholars: The AON Health Scholars is a cohort of vetted students who strive to successfully complete the Certified Clinical Medical Assistant exam and are eligible for employment within the St. Thomas Hospital System.

Dual Credit: Anatomy and Physiology
Industry Certifications: CPR, OSHA-10 Health, CCMA



Academy Business Partners

Nashville Academy of Nutrition and Dietetics
Meharry Medical College
Solace Oral Surgery
Senior Helpers of Middle TN
Just Cruisin Plus
Vanderbilt Dining Services
TSU College of Occupational Therapy
The Westin & Bobby Hotel
Disney Destinations
Premier World Discovery
Kelley Therapy Services
Blood Assurance
Nashville Convention & Visitors Corp
Vui's Vietnamese Kitchen
FOH BOH

Academy Clubs and Organizations

HOSA
Red Cross Committee
Culinary Club
Breakfast Club
Reading Buddies



The Ford Academy of Business and Innovation

Our mission is to empower its students to grow into driven professionals, prepared to creatively pursue their passions through relevant instruction in a collaborative and supportive community.

Pathways

Digital Art

- The Digital Arts & Design program of study is designed to develop strong knowledge in communications technologies and software applications.
- Learn the art of business while using industry standard applications and equipment such as; Adobe Photoshop, Adobe Illustrator, drawing tablets, digital cameras, studio lights, microphones, poster printers and more.
- Students can collaborate on Posters and Signs around the school and for the Academies of Glencliff.

Dual Credit: Digital Imaging, Adobe Suite, Personal Finance
Industry Certifications: Adobe Certified Associate

Entrepreneurship

- The Entrepreneurship program of study is for students who want to start, own, and operate their own businesses with broad coursework in organizational leadership, marketing and management, and advanced marketing strategies.
- Our New Teacher Ms. Christian plans to expand the DECA program this school year
- Students participate in Mock Interviews and Job Shadowing with the Academy Business Partners.

Dual Credit: Marketing and Management, Personal Finance
Industry Certifications: Microsoft Office Suite



Academy Business Partners

Studio Bank
Dell Inc.
Ford Motor Credit
Nashville State Community College
Nashville Entrepreneur Center
Atema Partners
Turnip Green Creative Reuse
First Community Mortgage
Watkins College of Art and Design
McLeod Software
Jordan Fremgen Design
Th Ashton Real Estate Group

Academy Clubs and Organizations

DECA
Film Makers Club



The Academy of Agriculture, Automotive and Technology

Our mission is to Excel academically by Utilizing skills and resources to Positively impact the community.

Pathways Highlights

Technology

•Students work with Industry Professionals quarterly through the ACE Mentors Program.

Dual Credit: Digital Electronics, Computer Aided Drafting, Personal Finance

Industry Certifications: OSHA-10

Environmental Biotechnology

•This Pathway host an Annual plant sale open to the community in our new Greenhouse, each spring.

•Biotech Lab partnership with Tennessee State University.

Dual Credit: Introduction to Plant Science at TSU, Intro to Biotech, Personal Finance

Industry Certifications: OSHA-10

Maintance and Light Repair

•One of the Newest Pathways to our Academy.
•Students learn hands on skills that they can perform, on faculty members vehicles with supervision from their teacher.

Dual Credit: Personal Finance, TCAT

Industry Certifications: OSHA-10



Academy Business Partners

Ace Mentors

American Society of Civil Engineers

Earl Swenson Associates, Inc.

Nashville Civic Design Center

Holtkamp Greenhouses

Nashville State Community College

TN State University College of

Agriculture

NEJATC

Metro Planning Department

Nashville International Airport Authority

MTSU College of Agriculture

Toyota Mid South Handling

DPR

Bristol Motor Sports

Carlex Glass

Academy Clubs and Organizations

FFA

Ace Mentors

Recycling Club



PENCIL Family Resource Center

The Glencliff Family Resource Center is open to all families of students in the Glencliff cluster and community members. The resource center has clothes, household items, hygiene products, baby products, and food available for individuals and/or families to pick up. The FRC Coordinator is available during school hours to assist students with needs and meet with parents to offer social services.

The FRC Coordinator always accepts donations of clothes, household items, snacks, gift cards (gas, grocery, etc.), and hygiene products!

The FRC meets with all low income students and families to help find the needs at home in order to support the success of the student at school.

For More Information, Please
Reach out to :

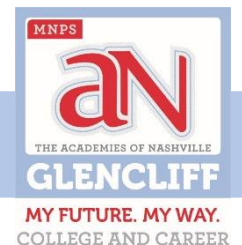
Maggie Kissinger
FRC Coordinator

615-333-5070 ext. 890088
Maggie.Kissinger@mnps.org



PENCIL
*Family Resource Center
at Glencliff High School*

Glencliff High School



GHS
Challenges-
Facilities



Glencliff High School

GHS
Challenges-
Facilities



Glencliff High School

GHS
Challenges-
Facilities



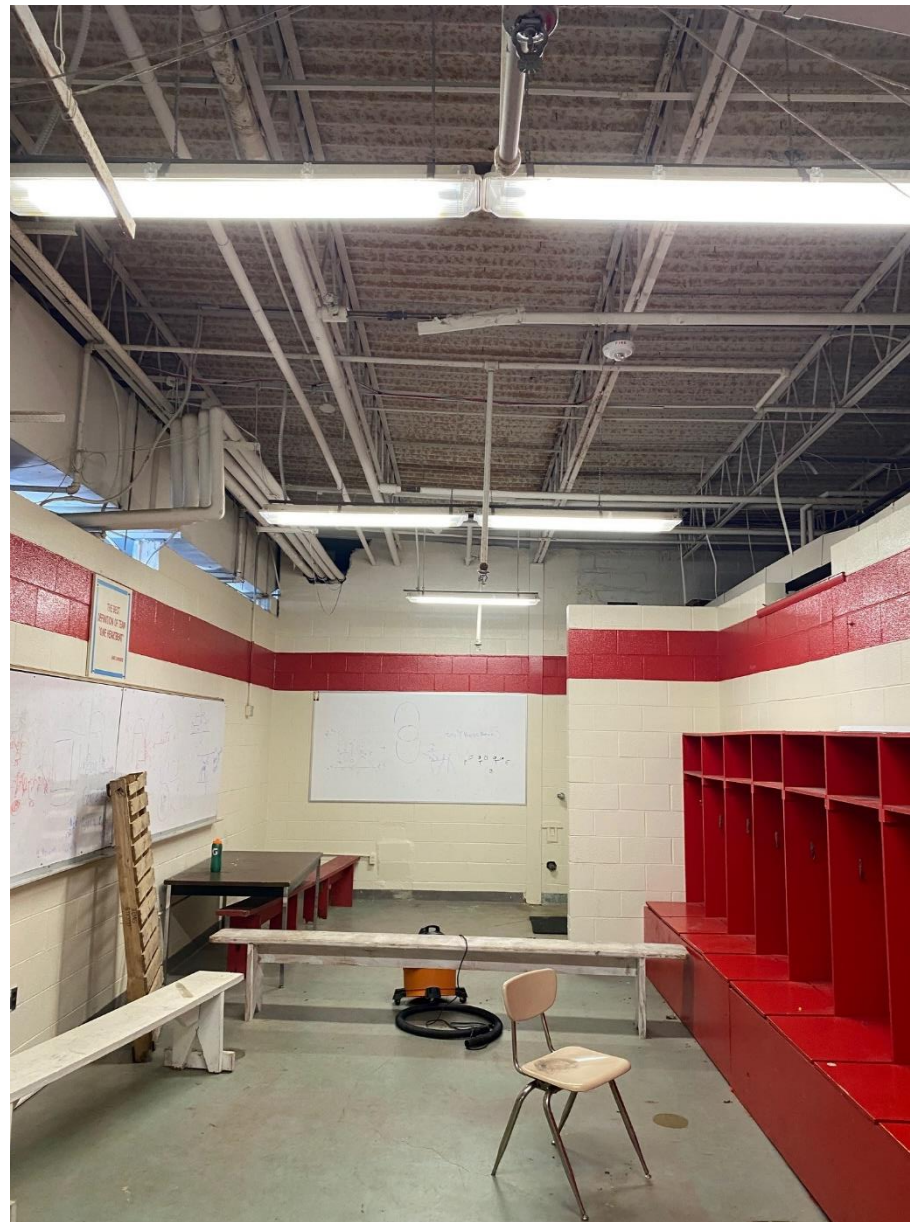
Glencliff High School

GHS Challenges- Facilities



Glencliff High School

GHS
Challenges-
Facilities



Glencliff High School

GHS Challenges- Budget

- But... EL and the state say I need a 1:35 ration and those 500 EL students need 15 teachers. Which means I need to pay for 10 teachers (\$758,000), where another school with no EL would not need any additional positions to meet this same requirement. So, where does that money come from? My EL weighted amount is \$577,000. Which will pay for 7 of those teachers which leaves me spending an additional \$210,000 out of my budget JUST to fund the needed teacher requirement. So, supporting those students outside of a teacher is not going to happen. Once again, our highest need students are left without any additional support.

GHS Challenges- Title Funding

- Also, for a school with 1150 kids, like GHS we have anywhere from 35-45% of our students that are undocumented. That accounts for 400-600 kids that are not in the base number for calculating title funds. Even with a multiplier we don't reach the 75% for full funding. For us that equates to about a \$350,000 budget cut.

Ways to Get Involved

Attend Any of our
Basketball Games
Scan for our 21-22
Schedule



Attend the
Winters Art Festival
December 7, 2021
@5:00 pm

Watch Glencliff at the
School Board Meeting on
December 14, 2021
@5:00 pm

Donate Items to the
Family Resource Center
Scan to see their needs

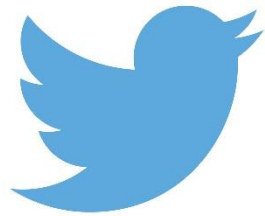


Glencliff High School

Stay Connected with Glenclyff!



[www. Glenclyffhigh.mnps.org](http://www.Glenclyffhigh.mnps.org)



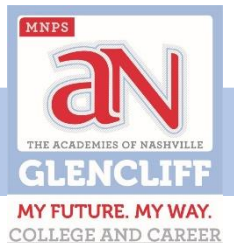
@GlenclyffColts



Glenclyff Colts



Glenclyff High School



The outcome
that
matters...

Providing
Opportunities
to **ALL** students.



Glenclyff High School doubles its college-bound graduates in just one year



Success story? No. That's not a big enough phrase. How about "College-Bound Phenomenon" instead?

Glenclyff High School celebrated Signing Day today, where college-bound seniors declared

FOLLOW CHILDREN FIRST

Enter your email address to follow this blog and receive notifications of new posts by email.

Join 895 other followers

Enter your email address

Follow

SEARCH



GO

BLOGS & LINKS

- My Academy Blog
- On Public Education
- Live Events
- Press Releases
- Metro Schools Home
- Children First Archive

SUBMIT STORIES

We want to hear your good news out of Metro Schools! [Email your stories to Children First.](#) Include your name and any important details we need to know, especially if you're submitting an



Contact Us

If you have questions or would like to learn more ways to get involved with Glencliff!



Clint Wilson

Executive Principal

Clint.Wilson@mnps.org
615-333-5070 ext. 325306



Thommye' Kelley

Academy Coach

Thommye.kelley@mnps.org
615-333-5070 ext. 325194

Glencliff High School

